

HOUSE RIDER & VENUE SPECS

Version March 2026



AFAS Live

TABLE OF CONTENTS

1. General Information AFAS Live	3
2. Black Box.....	6
3. Talent Stage	10
4. Entrance and Foyer	12
5. Café De Snor	15
6. Balcony	15
7. Backstage area.....	16
Appendix I: Health & Safety	19
Appendix II: House Regulations “Rigging Operations AFAS Live”	23
Appendix III: Standard Stage AFAS Live	25
Appendix IV: Floor load capacity Black Box.....	26
Appendix V: Company rules AFAS Live	27
Appendix VI: LED Screens and Narrowcasting.....	29
Appendix VII: Sustainability Statement	31
Appendix VIII: Catering Rider	33
Appendix IX: Special Effects Rider.....	36

1. General Information AFAS Live

General

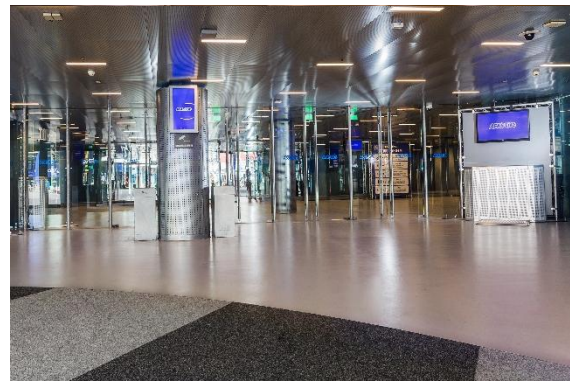
Since opening in 2001, AFAS Live has developed into one of Europe's leading concert venues. With a capacity up to 6,000 visitors and a unique location in Amsterdam, easily accessible by both public transport and car, AFAS Live is the place for large-scale live entertainment.

The venue is renowned for its unparalleled acoustics and is designed to deliver the ultimate live experience. International top artists such as Adele, Kendrick Lamar, Dua Lipa, and Arctic Monkeys have performed on its stage, making AFAS Live a staple on the international touring circuit. Leading Dutch artists also effortlessly fill the venue, while the stage simultaneously offers space for emerging talent to grow and establish themselves.

The Black Box offers maximum flexibility and is highly suitable for standing shows as well as seated concerts. Thanks to its smart layout and efficient logistics, the space can be quickly adapted for a wide range of productions. From concerts to corporate events, from sports competitions and television productions to fashion shows and product presentations, AFAS Live seamlessly adapts to every type of event.



AFAS Live at de Johan Cruijff Boulevard



Arrival in the spacious entrance

AFAS Live features the Black Box: a venue specifically designed for amplified music, offering phenomenal acoustics and a flexible setup. The adjustable and movable stage, fixed balcony, and retractable seating tiers make it suitable for both standing shows and seated events.

Visitors enter the venue through the main entrance and arrive in the 16-meter-high Foyer. On the first floor, the Talent Stage is located, suitable for smaller audiences or as an additional hospitality space, and can be used for purposes such as afterparties.

On the boulevard side, the Vide is located, accessible via the VIP entrance and a spiral staircase, offering additional space with atmospheric lighting. AFAS Live is also fully equipped with all necessary facilities, including catering, lockers, restrooms, and separate entrances for general admission and VIP guests.

Main entrance visitors address

AFAS Live
Johan Cruijff Boulevard 590
1101 DS, Amsterdam Zuidoost

Postal address

AFAS Live
Postbus 12812
1100 AV, Amsterdam Zuidoost

Reception/Office/Backstage Address (rear side of the building)

De Corridor 9
1101 BC Amsterdam Zuidoost
Tel : 020-4097979
E-mail : info@afaslive.nl

Overview of Roles at AFAS Live:

Sales Manager: Primary point of contact for all rental and commercial agreements.

Event Manager: Main point of contact throughout the entire pre-production phase.

Manager Operations: First point of contact on the production day(s).

Accessibility AFAS Live

AFAS Live is located in Amsterdam Zuidoost and is easily accessible by both car and public transport. Even Schiphol Airport is only a 15-minute drive from the venue.

AFAS Live is situated in an area where a lot of construction is currently taking place. As a result, routes and parking advice may change from time to time, but we remain accessible at all times. Please check with your contact person for the current situation or ask us for advice.

Parking

Cars can be parked in one of the surrounding parking garages in the ArenAPoort area. AFAS Live is not affiliated with these parking facilities. More information: <https://www.afaslive.nl/route-parkeren/auto>

From Utrecht & Amsterdam

Coming from the A2 from both Amsterdam and Utrecht: take exit Transferium / Ouderkerk aan de Amstel / Amsterdam Zuidoost.

From Amersfoort (A1)

- *Coming from the A1 from Amersfoort, take the A9 exit towards Schiphol / Amstelveen*
- *Then take the A2, exit Transferium / Ouderkerk aan de Amstel / Amsterdam Zuidoost*

Parking tickets for parking garages [P4](#) - [P5](#) - [P6](#) - [P10](#) - [P18](#) are available via the Events department (for current rates: please contact your point of contact).

Orders can be placed up to a minimum of 3 working days prior to the event (for more than 100 tickets: 10 working days). Only tickets that are returned on the day of the show via the Manager Operations or within 5 working days via us, both with a handover form, can be credited.

Private Coach Transport

Buses privately hired to transport groups of visitors to and from an event at AFAS Live can park at P-Bus. More information can be obtained from the Events department.

Public Transport

AFAS Live is easily accessible by train, metro, and bus via Amsterdam Bijlmer ArenA station, which is a 2-minute walk from the venue.

Bicycle

There is a supervised bicycle parking facility 200 meters away, at Bijlmer ArenA station. It is also possible to park bicycles in the bike racks along Johan Cruijff Boulevard, including near Pathé ArenA, Decathlon, and MediaMarkt.

Capacity AFAS Live

Space	Capacity*
<i>Black Box total</i>	<i>Up to 6,000 standing and 4,000 seated</i>
<i>Tribune</i>	<i>768 seats in standing configuration and 832 seats in seated configuration</i>
<i>Balcony</i>	<i>666 seats</i>
<i>EXTO platform</i>	<i>16 spaces (8 x wheelchair + 8 x companion)</i>
<i>Talent Stage</i>	<i>Up to 669 standing and 481 seated</i>
<i>Café De Snor</i>	<i>60 persons</i>

*The capacity of individual spaces and the building as a whole is determined by AFAS Live based on layout plans and in accordance with the requirements set out in the operating permit.

Facilities

Waste

The lessee must make use of the containers and waste bins available within the building. Waste streams that AFAS Live can recycle include paper/cardboard, plastic & beverage packaging, swill (organic waste), coffee grounds, plastic rPET cups, electronics, wood, and textiles. Bulky waste or set materials must be removed immediately.

Damage

To prevent damage, the lessee is not permitted to alter floors, walls, ceilings, or any other part of the rented premises. Drilling holes, chiseling, breaking, nailing, or painting on walls and floors is prohibited. Attaching materials to walls and the use of tape on walls and floors is not allowed without permission from AFAS Live management. The use of double-sided tape is strictly prohibited. In the event of damage, the lessee will be held liable.

2. Black Box

General

The Black Box is the large rectangular main hall of AFAS Live, featuring two bars. Above these bars are the VIP boxes, which are accessible via the Vide/Talent Stage or the backstage area (these are not part of the leased premises). There is also a bar located on the fixed balcony.



Empty Black



Black Box seated plan

Stage / Balcony / Additional Accessibility Platform

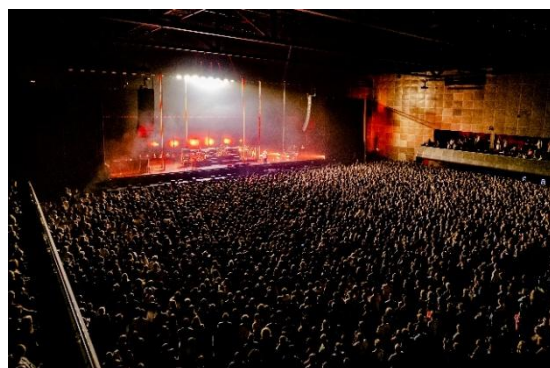
A standard stage (including stairs and railings) is available, which is adjustable in height and width and can be fully removed if required (this is not included in the basic rental. For a standard stage drawing, see [Appendix III](#)). The stage is constructed from modular sections and finished with a rough concrete plywood floor surface. It is not permitted to use nails, screws, (double-sided) tape, or any other materials on or in the stage.

Multiple stage configurations are possible, subject to additional costs. All stage requests must be arranged through AFAS Live at all times. After dismantling, the lessee must leave the stage in the same condition as it was provided at the start of the rental period. By order of the fire department, the stage must always be positioned at least one meter away from the fixed rear wall of the Black Box.

In addition, the Black Box features a fixed balcony and a retractable tiered seating system. The seating tiers are modular and can be arranged in various configurations. It is also possible (upon request) to create a front-of-house recess measuring 4.90 meters wide and four rows deep. If required, an Additional Accessibility Platform can be installed.



Full Black Box



Theatre Curtains

If required, theatre curtains are available in the form of one backdrop and two side curtains, installed at fixed positions.

Cable Ramps

AFAS Live has 40 cable ramps, each measuring 91 cm, for covering cabling on the floor

House Lighting

The standard house lighting in the Black Box is dimmable. It is controlled via DMX and is operated by default from “Stage Left” at distribution point K1. It is also possible to take over control of the house lighting and connect it to a dedicated lighting console, allowing operation from front of house. The working lights in the Black Box can be switched in multiple groups.

Sound Levels

The maximum permitted sound level in the Black Box is based on the fourth covenant on the prevention of hearing damage from amplified music:

- The sound level is limited to a maximum of $Leq = 103$ dB(A), measured over 15 minutes.
- For visitor age groups under 18, the following maximum sound levels apply:
 - Up to 13 years: $Leq = 91$ dB(A), measured over 15 minutes
 - 14 and 15 years: $Leq = 96$ dB(A), measured over 15 minutes
 - 16 and 17 years: $Leq = 100$ dB(A), measured over 15 minutes

The applicable sound level is determined by the age of the target audience and/or when more than 50% of visitors belong to a specific age group. For a mixed group aged 13 to 17, a maximum value of 97 dB(A), measured over 15 minutes, is applied.

- AFAS Live provides a dB meter at front of house, which is monitored throughout the show.

Follow Spots

AFAS Live does not provide follow spots. The placement of follow spots on the balcony must be arranged in consultation with the Manager Operations. Any required stage decks for follow spots on the balcony must be included in the stage request via the Events department.

Electricity, Rigging and Security

Only an authorized AFAS Live technician is permitted to make or remove connections to the power supply. All connections above 32 A are switched off by default and can be activated upon request.

If rigging is installed in the lower section of the venue (above the audience area, not in the stage tower), there is a high likelihood that the rigging and trusses will interfere with the line detection system of the fire alarm installation. For insurance reasons, as full monitoring of the fire alarm system cannot always be guaranteed in such cases, overnight security is mandatory.

Technical Specifications Black Box

Dimensions	61 x 43 m (l x b)
Hall surface area	± 2.600 m ²
Height of audience area	12.5 m bottom of truss 17 m top of truss
Height of stage area	17.5 m bottom of truss 21 m top of truss
Standard stage dimensions	18 x 12 m (l x b)
Standard stage height	The most common dimension is: 1.8 meters
Dimensions of standard ‘side wings’	6 x 4 m (b x d)
Dimensions of stage elements	2 x 1 m
Stage floor finish	Rough floor surface
Maximum stage load	For construction of a standard system/decks with 2 m beams: Max. static load: 733 kg/m ² Max. rolling load: 333 kg/m ² Railing load: 30 kg/m

	For non-standard requests or the use of separate decks, AFAS Live can request load specifications from Stageco.
Dimensions of adjoining access doors	Largest door: 3.9 x 4.5 m (w x h) Largest door from audience area to Black Box (mirror wall): 1.70 x 2.66 m (w x h) Lowest clearance under VIP boxes: 2.66 m
Sound absorption	80%
Maximum permitted sound level	103 dB(A)
Height of catwalks / walkways	Audience area: 12.5 m above floor level Stage area: 17.5 m above floor level
Load capacity of catwalks / walkways	1 kN/m ² , or 100 kg/m along the side edges 1 kN/m ² , or 100 kg/m ² on the floor
Height of trusses in audience area	12.5 m bottom of truss 17 m top of truss
Height of stage area (stage tower)	17.5 m bottom of truss 21 m top of truss
Number of trusses	7 trusses
Distance between trusses	7.8 meters (center-to-center distance)
Load capacity of trusses (point load)	2x point load of 40 kN (4000 kg) per truss, center-to-center min. 7.5 meters, or 4x point load of 20 kN (2000 kg) per truss, center-to-center min. 7.5 meters
Truss load distribution	- 5.35 kN/m, or 535 kg/m on the top truss chord - 4.68 kN/m, or 468 kg/m on the bottom truss chord The bottom truss chord may only be loaded vertically

Power supply stage right (lighting distribution – L1)	- 1 x 400 A, 230/400 V Powerlock (5p) - 3 x 125 A, 230/400 V CEE-form (5p) - 2 x 63 A, 230/400 V CEE-form (5p) - 4 x 32 A, 230/400 V CEE-form (5p) - 1 x 16 A, 230 V CEE-form (5p) - 3 x 16 A, 230 V CEE-form (3p) maximum total load capacity of L1: 630 amperes per phase
Power supply stage left (audio distribution – K1) *	- 1 x 200 A, 230/400 V Powerlock - 2 x 125 A, 230/400 V CEE-form (5p) - 2 x 63 A, 230/400 V CEE-form (5p) - 3 x 32 A, 230/400 V CEE-form (5p) - 1 x 16 A, 230 V CEE-form (5p) - 3 x 16 A, 230 V CEE-form (3p) maximum total load capacity of K1: 250 amperes per phase
Power supply stage center (additional distribution – K14) *	- 1 x 400 A, 230/400 V Powerlock (5p) - 3 x 125 A, 230/400 V CEE-form (5p) - 2 x 63 A, 230/400 V CEE-form (5p) - 4 x 32 A, 230/400 V CEE-form (5p) - 1 x 16 A, 230 V CEE-form (5p) - 3 x 16 A, 230 V CEE-form (3p) maximum total load capacity of K14: 630 amperes per phase residual current device optional for 125 A and 63 A

Other power supply Black Box	<ul style="list-style-type: none"> - 6 x 32 A, 230/400 V CEE-form (5p) along the wall (ground floor) - 6 x 16 A, 230 V CEE-form (3p) along the wall (ground floor) - 2 x 32 A, 230/400 V CEE-form (5p) grandstand (1st floor) - 3 x 32 A, 230/400 V CEE-form (5p) balcony (3rd floor) - 4 x 32 A, 230/400 V CEE-form (5p) catwalk (4th floor)
Portable distribution units	- 1 x 125 A distribution unit: input 125 A, output 2 x 63 A and 2 x 32 A (CEE-form 5p)
Dimensions of theatre curtains (black wool):	<ul style="list-style-type: none"> - Backdrop: 28 m x 10 m (w x h), consisting of 7 curtains of 4 m x 10 m - Side curtains: 12 m per side, consisting of 2 curtains of 4 m x 10 m and 1 curtain of 4 m x 8 m (w x h)
- Backdrop - Side curtains - Balcony masking	
Standard house lighting (dimnable)	168 Robin Parfect 100 (mode 6 RGBW) 12 Robe Tetra1 (mode 1)
Work lighting	46 LED 400 W fixtures
Floor	Concrete with a PU coating as the top layer
Floor load capacity	Traffic class 45: Maximum axle load 15 tons or 2000 kg/m ²
Personnel lift	1 x model SMWP11-2100, self-propelled. Maximum working height: 11 m. Maximum working load: 150 kg. Not permitted for use on the stage.
Personnel lift	1 x ALP lift, type PH 1300, 230 Volt / max. working height 13 m. Permitted for use on the stage

* In connection with the emergency response plan in effect at AFAS Live, the lessee is required to connect all amplifiers of sound systems in the Black Box to distribution point K1; Stage Left.

3. Talent Stage

General

The Talent Stage is a triangular venue located on the first floor of AFAS Live. The space has been designed in collaboration with our partner Beatbox, whose branding is also visible throughout the venue. It is an ideal space for events such as aftershows, plenary sessions, and dinners. For corporate meetings, the Talent Stage can be combined with the adjacent Vide.

The ambient lighting is dimmable. There is one fixed bar available, with additional options for mobile bars. The Talent Stage is equipped with restrooms.

Standard facilities, including a fixed lighting and sound system with DJ equipment, make the Talent Stage highly suitable for pre- and after-parties.



Talent Stage features branding from our partner Beatbox

The

Sound equipment

Sound levels measured in the Talent Stage must not exceed 95 dB(A). The existing lighting and sound system, including DJ equipment, can be used in the Talent Stage. AFAS Live does not provide microphones.

Algemene specificaties Talent Stage

Dimensions	- Triangle; long sides 38x44m, short side 20m
Floor area	- 500 m ²
Height	- 10,8 m
Rigging points	- 7 units with 30mm lifting eye (drawing available on request)
Load per rigging point	- vertical 5 kN / 500 kg - Horizontal load is NOT permitted
Power supply: - Technical room	- 4 x 32 A. 230/400 V CEE-form (5p) - 4 x 16 A. 230 V CEE-form (3p)
Floor	- Copmncrete with PU-coating as top layer
Floor load capacity	- 500kg/m ² or max. axle-load 10kN (1000kg) centre-to-centre 1metre

Technische specificaties Talent Stage

Lighting equipment

Quantity	Description
65	Robin Parfect
6	Elation KL Fresnel 8 PO
1	Swefog 2000

15 m	Front truss H30 V
8 x 5 x 10 m	Triangular truss H30 V

Sound equipment

Quantity	Description
	PA L/R
2	Synco W8LM Grid
4	Shackle with screw pin (SWL 33 kN)
8	Synco W8LC/W8LM connection pin
12	Synco W8LM mini cabinet
2	Synco W8LMD down cabinet
4	Martin 218S sub
	For amp racks
2	Lake LM26
1	Lake LM44
4	Synco MA2.8S amplifier

DJ Equipment (setup on DJ booth)

Quantity	Description
2	Technics SL-1200 turntable incl. Ortofon Concorde cartridge
1	Pioneer DJM-900 NXS2
3	Pioneer CDJ-3000 CD player

4. Entrance and Foyer

General

Visitors enter the building through the main entrance. This is also the area where reception, security checks, and ticket scanning typically take place. The entrance provides access to the Foyer, Talent Stage, Vide, and, of course, the Black Box. The box office, where AFAS Live prepaid payment cards are available among other services, is located immediately to the right within the transparent entrance. This box office also provides access to the external Box Office, located along the façade. Screens are available in the entrance area for displaying content.

AFAS Live also features a separate VIP entrance for guests and sponsors. This entrance, located next to the main entrance, is equipped with a glass revolving door. A spiral staircase leads guests to the first floor (the Vide), from where they can proceed to the VIP boxes.

On the ground floor of AFAS Live, adjacent to the entrance, is the Foyer: a large, high, rectangular space with a transparent front façade. The Foyer serves an important connecting function within AFAS Live. On the ground floor, it connects to the Black Box and, via stairs or elevator, to the first floor, where the Talent Stage and the Vide are located. Due to its length and height, the Foyer is highly suitable as a reception and welcome area. With the use of furniture, the space can easily be arranged as a lounge or catering area.

It is important that furniture and stands are placed exclusively along the long side of the Foyer, with a maximum depth of 2.5 meters (depending on the number of guests). Placement of furniture or stands is only permitted after prior consultation with the Events department.

The Foyer contains lockers, a food kiosk including a snack wall, an activation booth, a photobooth, several small bars, and one large bar. There are 2,169 lockers in the Foyer; an additional 544 lockers are located in the corridor on the Pathé side. In total, 2,713 lockers are available on the ground floor.



Foyer, photographed from the end of the walkway



Foyer, photographed from VIP-entrance

On the first floor, adjacent to the Talent Stage, there is the Vide, from which a walkway provides access to one of our VIP boxes. The Vide is multifunctional and can be used as an additional break-out or workshop space alongside the Talent Stage, Foyer, and Black Box. It is an ideal space for meetings, drinks receptions, dinners, or brainstorming sessions, with flexible layout options. The space can also be used as a catering and/or reception area.

Narrowcasting screens entrance, Foyer and first floor

Through our narrowcasting system, different content can be scheduled on screens throughout the venue. Screen resolutions may vary. Content can be submitted via the Communications department. See [Appendix VI](#) for more information.

LED Screens Exterior

On the exterior façade of AFAS Live, three circular LED screens are installed, with a total surface area of 36 m². Due to their design and excellent visibility, these LED screens stand out prominently along Johan Cruijff Boulevard. With targeted content, you can reach visitors of AFAS Live, Ziggo Dome, and Johan Cruijff Arena. In addition, the Boulevard attracts a large number of shoppers and commuters on a daily basis.

Image specifications (total):

Width: 1920 pixels

Height: 1080 pixels

Resolution: 72 pixels/inch

You can contact the Communications department (communicatie@afaslive.nl) if you wish to make use of these LED screens. See [Appendix VI](#) for more information.

Please note: All other expressions in and around AFAS Live must always be coordinated in advance with and approved by the Communications Team. It is not permitted to independently place any materials such as stickers, posters, or signage, or to paint, mount, or otherwise display communication materials inside or on the exterior of the building. This applies to all forms of visual communication that do not run through the regular communication channels or have not been agreed upon in advance.

Only after explicit approval from the Communications Team may any materials be produced or installed.

Merchandising

It is possible to sell merchandise in the entrance hall and/or in the Foyer. The sale of merchandise is exclusively handled by Arnie Merch B.V. For more information, please contact: info@arniemerch.com / +31 (0)6 34689800.

Technical Specifications Entrance

Floor area	- 275 m ²
Height	- 2.68 m
Main entrance door dimensions	- Largest door: 2.13 x 2.5 m (w x h)
Glass intermediate door dimensions	- Largest door: 1.88 x 2.66 m (w x h)
Floor	- Concrete with PU coating as top layer
Power supply	- 2 x 32 A, 230/400 V CEE-form (5p) - 3 x 16 A, 230 V CEE-form (3p)

Technical Specifications Foyer

Dimensions	- Length incl. hospitality area: 110 x 8 x 15.5 m (l x w x h) - Floor area: 90 x 8 x 15.5 m (l x w x h)
Floor area	- Length incl. hospitality area: 880 m ² - Floor area: 720 m ²
Height	- Lower section: 2.70 m, upper section: 15.5 m
(Emergency) door dimensions Foyer to outside	- 2 x 2.6 m (w x h) - Clearance height: 2 x 2.54 m (w x h)
Floor	- Concrete with PU coating as top layer
Floor load capacity	- Max. 500 kg/m ² or max. axle load 25 kN (2500 kg), center-to-center 1 m - Forklift use in the Foyer is not permitted
Power supply	- 4 x 32 A, 230/400 V CEE-form (5p) in cable duct along wall - 4 x 16 A, 230 V CEE-form (3p) - 6 x 16 A, 230 V wall sockets along cable duct / wall

Lift dimensions	- 89 x 230 x 139 cm (w x h x d)
Lift capacity	- 630 kg / 8 persons

Technical Specifications Vide

Dimensions	- 34 x 8 x 11.5 m (l x w x h)
Floor area	- 255 m ²
Height	- 11.5 m
Power supply	- 3 x 32A - 10 x 16A
Floor load capacity	- 500 kg/m ² or max. axle load 10 kN (1000 kg), center-to-center 1 m

5. Café De Snor

General

On the first floor of AFAS Live, next to the Talent Stage, you will find our traditional brown café: Café De Snor. An authentic Dutch-style pub with all the characteristic features. It is an ideal space for pre-event receptions or post-event drinks.



Café De Snor, the traditional pub of AFAS Live

Technical Specifications Café De Snor

Dimensions	8.10 x 5.90 x 3.5 m (l x w x h)
Floor area	45 m ²
Height	3.5 m
Power supply	10 x 16 A, 230 V wall sockets along the wall

6. Balcony

The balcony is located on the third floor and can be accessed by lift or via the stairs next to the Talent Stage. The balcony has 666 seats and features its own bar within the Black Box. There are also options for mobile bars in the hallway outside the Black Box. In addition, the balcony is equipped with restrooms.

On the platform behind the central seating section of the balcony, it is possible to position follow spots. If the balcony is closed to the public, it can be draped with black curtains so that it is no longer visible. This visually reduces the size of the Black Box and creates a more intimate atmosphere.

Technical Specifications Balcony

Dimensions	Underside of balcony from ground floor: 6.18 m
Power supply	- 3 x 32 A, 230/400 V CEE-form (5p) - 3 x 16 A, 230 V wall sockets

7. Backstage area

General

The backstage area is located at the rear of the building (De Corridor 9). This is also where the AFAS Live office is situated, with the reception on the ground floor and offices on the second floor. For productions, there are production offices on the first floor. In addition, the backstage area features a large kitchen on the ground floor, catering areas on the first and second floors, and dressing rooms on the second floor. The loading dock is also located on this side of the building. For the transport of goods, a freight elevator is available (2.7 x 1.18 x 2.10 m (l x w x h)) with a maximum capacity of 2,000 kg / 26 persons.



Backstage reception



Dressingroom

Access Policy

AFAS Live applies an access policy at the backstage entrance during all productions. All crew, suppliers, and artists entering the venue through this entrance must be registered in advance. At the backstage entrance, a valid ID will be checked against the accreditation list. Persons who are not registered and/or cannot present a valid ID will not be granted access to the venue. In addition, bag checks may be carried out upon entry via the backstage entrance. Further information and instructions will be provided by the Events department.

Production Offices

There are three production offices of approximately 12 m² each on the first floor, intended for production management. A copier/printer is available.

Internet

Free Wi-Fi is available in the backstage area of AFAS Live; the password will be provided during load-in. In addition, fixed internet connections are available at various locations throughout the building, both backstage and in public areas. The internet signal is delivered via UTP connections to the desired location and runs through switches and a firewall. The connections are centralized in various patch cabinets, which are interconnected via an internal fiber optic network.

Signet (ISP signal provider)

ISP signal via the Eurofiber physical connection:

- Type: Eurofiber Plus Access
- Speed (options):
 - 20 Mbps up/down
 - 50 Mbps up/down
 - 100 Mbps up/down
 - 150 Mbps up/down
 - 200 Mbps up/down
- Data limit: None

More information is available via the Events department.

Catering Areas

There is a large production kitchen on the ground floor. The catering area on the first floor has a small open kitchen, and the catering area on the second floor has a separate preparation kitchen. The use of gas is not permitted at AFAS Live.

Facilities large kitchen (ground floor)

- Cold storage room
- Ice cube machine
- Washing and work tables
- Coffee machines
- Deep fryer
- Extraction system
- Additional power supply: 3 x 32 A, 230/400 V CEE-form (5p)
- Additional power supply on request: 1 x 125 A, 230/400 V CEE-form (5p)

Facilities catering areas (1st and 2nd floor)

- Still and sparkling water tap
- Coffee machine
- Sink
- Griddle plate 30 x 50 (first floor only)
- Extraction system
- Refrigerator
- Freezer
- Additional power supply catering 1st floor: 1 x 32 A, 230/400 V CEE-form (5p)
- Additional power supply catering 1st floor: 2 x 16 A, 230 V CEE-form (3p)
- Additional power supply catering 2nd floor: 1 x 32 A, 230/400 V CEE-form (5p)
- Additional power supply catering 2nd floor: 2 x 16 A, 230 V CEE-form (3p)

Dressing Rooms

There are 8 dressing rooms located on the second floor.

- There are 2 large dressing rooms, 6 small dressing rooms, and 1 separate bathroom
- All dressing rooms are equipped with tables, chairs, a sofa, ambient lighting, and a television
- 7 dressing rooms have a shower and toilet; dressing room 8 does not
- Dressing rooms 1, 2, 3, 4, 6, and 8 each have 2 make-up mirrors measuring 74 cm x 60 cm (w x h) and 1 mirror measuring 53 cm x 129 cm
- Dressing room 7 has 3 make-up mirrors measuring 94 cm x 60 cm (w x h) and 1 mirror measuring 40 cm x 120 cm (w x h)
- Dressing room 5 has 3 make-up mirrors measuring 88 cm x 60 cm (w x h) and 1 mirror measuring 53 cm x 129 cm (w x h)
- All dressing rooms can be locked

Loading dock

Indoor loading and unloading is permitted in the designated loading dock. It is also possible to drive into the venue to unload, with a maximum speed of 5 km/h; engines must be switched off as soon as possible.

Loading and/or unloading on the roadway or pedestrian area of De Corridor (rear side) of AFAS Live is not permitted. The building does not have a loading dock. After loading and unloading, all vehicles must leave the building immediately. Parking in the loading dock is only allowed with permission from the Manager Operations on duty.

Two forklifts (excluding operator) are available. A valid forklift certificate is required to operate them.

A water connection for nightliners is available in the loading dock, and waste containers are located there as well. Waste must be separated, and bulky waste must be removed by the lessee. Any bulky waste left behind will be charged to the lessee.

Truck traffic during load-in and load-out

Parking or stopping on public roads in the area surrounding AFAS Live (including De Corridor) is prohibited and may result in fines. Lessees are therefore requested to prepare a plan in advance for truck traffic during load-in and load-out. In case of high visitor numbers in the area (from 10,000 visitors, combined with events at Ziggo Dome and/or Johan Cruijff ArenA), De Corridor may be temporarily closed by traffic controllers. Always coordinate truck arrival times for load-out on the show day with the Manager Operations of AFAS Live.

Parking outside the building is only permitted in designated parking areas. Information on current locations and rates is available via the Events department. If trucks need to wait in the area around AFAS Live during load-in and load-out, this is permitted in the designated buffer zone on Keienbergweg.

Technical Specifications Loading dock

Afmetingen	22 x 14.5 m (l x w)
Inrijdhoogte	Max. 4.2 m
Afmeting buitendeuren	- Large: 13 x 4.5 m (w x h) - Small: 7 x 4.5 m (w x h)
Afmetingen deuren naar Black Box	3.9 x 4.5 m (w x h)
Spanningsvoorziening	- 1 x 125 A, 230/400 V CEE-form (5p) (can be linked to the ground floor kitchen for additional power; in that case not available in L&L) - 1 x 63 A, 230/400 V CEE-form (5p) - 1 x 32 A, 230/400 V CEE-form (5p) - 3 x 16 A, 230 V CEE-form (3p)
Vorkheftruck (2x)	- Maximum height: 4800 mm - Lifting capacity: 2,000 kg - Minimum clearance height: 2145 mm
Goederenlift	Dimensions: 2.7 x 1.18 x 2.10 m (l x w x h)
Vloerbelasting	- Traffic class 45: Maximum axle load: 15 tons or 2000 kg/m ²

Appendix I: Health & Safety

General

AFAS Live applies strict safety requirements to both itself and the lessee. All parties must comply with occupational health and safety regulations, a fixed structure is in place for building and crowd security, requirements apply to the use of open fire and pyrotechnics, and clear house rules and communication lines are maintained.

Occupational Health and Safety (Arbo)

All personnel working at AFAS Live are expected to comply with occupational health and safety regulations. This also applies to the lessee and any parties engaged by the lessee. Failure to comply may result in removal from the workplace.

Safety Organization

All visitors and staff at AFAS Live must adhere to the emergency response plan and follow instructions from management, permanent security staff, and external emergency services such as Police, Fire Department, and Public Health Services (GGD).

Communication with External Parties Regarding Safety

During and after events, the Manager Operations on duty at AFAS Live is the sole point of contact for external parties. The Manager Operations is the Head of Emergency Response (BHV) and represents AFAS Live management in communication with external parties such as Police, Fire Department, GGD, and authorities.

Communication in Case of Emergencies

In the event of an incident, the Manager Operations will first inform the Managing Director of AFAS Live. The Managing Director is the only person authorized to communicate with the press on behalf of AFAS Live.

Emergency Response Plan

General

The emergency response plan forms part of the operating permit. All visitors and staff must comply with this plan and follow instructions from management, security staff, and emergency services (Police, Fire Department, GGD).

Evacuation

The management of AFAS Live has the authority, in consultation with Police and Fire Department, to initiate an evacuation. Procedures are described in the emergency response plan. AFAS Live is equipped with an evacuation alarm system.

During an evacuation, all sound sources other than the evacuation system that may interfere with or override the evacuation signal must be switched off. The lessee is required to connect all sound system amplifiers in the Black Box to distribution point K1.

Lessee Availability

The lessee's responsible representative must be continuously reachable during the event and during load-in and load-out.

House Security

Commissioned by AFAS Live and under the supervision of the Manager Operations, house security staff from The Security Company are deployed during build-up, breakdown, and the event itself. They are part of the emergency response organization and perform security tasks from fixed positions within AFAS Live, including monitoring backstage access and operating the security control room.

In consultation, security deployment can be scaled up when necessary, for example when multiple loading doors are used simultaneously. The lessee is required to supplement house security with show security staff based on AFAS Live's minimum requirements.

Show Security

The lessee must meet the minimum requirements for security staffing based on “security templates,” which depend on the type of event, expected attendance, and venue setup. Security companies and personnel must comply with the Dutch Private Security Organizations and Investigation Agencies Act. All security staff must carry valid identification issued by the Ministry of Justice and present it upon request.

The lessee must contract one of the security companies accredited by AFAS Live.

Company Rules for Visitors

The company rules of AFAS Live apply to all events (see [Appendix V](#)). Please refer to the most up-to-date version of the house rules at: www.afaslive.nl/en/practical-information/companyrules

Barriers / Crowd Control Barriers

AFAS Live provides a fixed set of black barriers:

- 50 straight
- 4 flex
- 3 snake
- 4 sets of slopes
- 6 blind panels (DB HF Plate)
- 2 end caps (DB HF End Cap)
- 6 DB straight half sections (0.5 m)

The use of barriers during events is mandatory unless otherwise specified by AFAS Live. Other types of barriers are not permitted.

Glassware

For safety reasons, beverages during concerts are served in rPET plastic cups. Glassware is only permitted with written approval from AFAS Live.

Pyrotechnics / Open Fire / Special Effects

The use of fireworks, open flames, and other special effects is only permitted if prior approval has been granted and all applicable conditions set out in this article have been met.

If fireworks are to be used, and only insofar as this is permitted under the applicable environmental permit and building permit and at the sole discretion of the Lessor, the Lessee must submit a proper fireworks plan. This plan must include:

- a floor plan indicating the numbered locations where fireworks will be used;
- an overview, for each numbered location, of the materials used;
- a description of each effect;
- the expected duration;
- the heights to be reached; and
- the expected time of use.

The fireworks plan must be submitted to the Lessor simultaneously with the application to the competent authorities. The Lessee warrants the accuracy of the fireworks plan and is fully responsible for all consequences arising from the use of fireworks.

All costs of any measures or facilities required in connection with the use of fireworks shall be borne by the Lessee. The Lessee shall also bear full responsibility for any consequences resulting from a failure to apply for, or obtain in time, the required approvals or declarations of no objection.

In addition, the use of fireworks, open flames, and other show effects must be included in a Production Risk Inventory and Evaluation (PRIE). The PRIE must be submitted to the Lessor in a timely manner.

Please refer to the Special Effects Rider in [Appendix IX](#) for further information on all types of special effects.

Capacity AFAS Live

The capacity of individual spaces and the venue as a whole is determined by AFAS Live based on layout plans and the requirements of the operating permit.

Layout Plans

All layout plans must comply with the operating permit of AFAS Live and must be submitted for approval no later than four weeks prior to the start of event build-up.

Stage Configurations Black Box

A standard concert stage in the Black Box has a maximum size of 18 meters wide and 12 meters deep. Larger stages directly affect capacity and must be approved by AFAS Live.

The stage must be positioned at least 1 meter from the rear wall of the Black Box, unless otherwise agreed based on capacity calculations in consultation with AFAS Live.



Seating Configurations Black Box

Drawings of seating configurations approved under the operating permit are available from AFAS Live. All aisles within the seating layout must be kept free of cables and other obstacles. The placement of any obstructions (such as crowd control barriers, lighting and sound equipment, etc.) that may affect the seating layout must be submitted to AFAS Live for approval.

All submitted layout drawings must:

- include top views of all public areas to be used*, namely: Entrance, Foyer, Talent Stage, Vide, Black Box, balcony hall (3rd floor);
- include the name of the venue (AFAS Live) and the specific space (e.g. Black Box), date, event name, and maximum number of visitors;
- include a scale; drawings must be clearly legible and preferably submitted in DWG, SCD, PDF format, or printed on A3 size;
- include clear dimensions of tables, chairs, curtains, set pieces, and other installations or objects within the spaces;
- include clear dimensions of aisles and widths of escape routes;
- include positions of emergency and/or emergency lighting;
- include additional fire safety provisions (e.g. portable fire extinguishers).
- Standard drawings are available upon request from AFAS Live.

Fire Safety Provisions

- All fire safety facilities such as manual fire alarms, smoke detectors, and fire hose reels must remain clearly visible and accessible;
- all exit and emergency exit signs must be clearly visible and illuminated when people are present;
- all escape routes and emergency exits must be kept clear;

- entrances, passageways, exits, emergency exits, aisles, galleries, stairs, ramps, and escape routes must always be kept free of obstructions over the required minimum width; floors must have a non-slip, closed surface;
- within a radius equal to the total width of (emergency) exits, no tables, chairs, cables, or other obstacles may be present; aisles between tables and seating arrangements must be sufficiently wide and lead directly to exits;
- areas outside the building near entrances and exits must be kept clear of obstructions at all times;
- curtains in or near entrances, passageways, exits, and emergency exits must be installed in such a way that they move with the doors and do not obstruct or hinder opening.

Curtains, Set Pieces, Decoration, Cabling, and Stand Construction

- Set pieces, props, and similar materials must not be easily flammable and must not produce excessive smoke in case of fire;
- hanging curtains, wings, and set pieces must be inherently flame-retardant or treated to be flame-retardant;
- treated materials must carry a label or stamp indicating fire brigade approval and date/validity of treatment;
- treatment must be completed at least 24 hours before the event; untreated materials must be removed before the event;
- hanging materials must be positioned so they cannot come into contact with lighting or similar heat sources;
- freely hanging textiles must be at least 10 cm above the floor;
- a minimum clearance of 2.50 m must remain between the floor and decorations;
- cables must be secured to prevent tripping hazards; loose cables are not permitted;
- cables are not allowed between compartmentalizing (self-closing) doors;
- floor and stair coverings must be secured to prevent shifting, curling, or rolling and must not create slipping or tripping hazards;
- balloons filled with flammable gas are not permitted;
- stand construction, stages, and similar structures must use non-combustible materials and/or wood-based materials such as hardboard, plywood, multiplex, or chipboard, with a minimum thickness of 3.5 mm;
- aisles between stands or booths must be at least 1.10 m wide;
- additional requirements apply to materials such as glass, textiles, plastics, and paper (specifications available from AFAS Live).

Vehicle Placement

With permission from AFAS Live management, vehicles such as cars, motorcycles, tractors, trailers, and containers may only be positioned in the loading dock. Vehicles remaining overnight in this area must not be left unattended; one security guard from The Security Company will be required at the lessee's expense.

Motor vehicles may remain in public areas during show days, provided the battery terminals are disconnected and the fuel reserve warning light is on.

Electric vehicles may only be placed inside the building under strict conditions. A risk assessment is required, including fire safety control measures.

Accessibility for Fire Services

For fire service access, a clear route of at least 5.50 meters must be maintained at both the front and rear of AFAS Live.

Appendix II: House Regulations “Rigging Operations AFAS Live”

Rigging Operations

All rigging activities at AFAS Live are exclusively carried out by Frontline Rigging Consultants B.V. (Frontline). As the representative of AFAS Live, Frontline is contractually responsible for advising on the planning, execution, and installation of (temporary) lifting installations for events. This means that all rigging plans must be approved in advance and can only be executed by Frontline. Contact details Frontline: +31 30 2428280, info@frontline-rigging.nl.

Helmet Requirement

During load-in and load-out, wearing a safety helmet and safety shoes is mandatory.

General

1. If the lessee/user plans rigging activities for their project, the Manager Operations and Frontline must be informed.
2. As the representative of AFAS Live, Frontline is the responsible party for advising on and planning/executing/installing (temporary) lifting installations for events.

Preparation

A “rigging plan” must be submitted to Frontline no later than two weeks prior to the start of the event.

What is a rigging plan:

- The rigging plan specifies the point loads exerted by the suspended structures on the roof construction (point loads must be broken down into vertical and horizontal reaction forces). These point loads include the entire lifting chain. The position of these loads must be shown to scale and in relation to the roof structure.
- The rigging plan must indicate which structures will be suspended (i.e. everything below the point loads) and their purpose, such as sound, lighting, set design, and effects.
- The rigging plan must state the lifting speeds and which points are lifted simultaneously.
- It must specify how the point loads are attached to the roof structure.
- It must specify which lifting equipment will be used, their safe working load, and their brand/manufacturer.

If Frontline identifies deficiencies in the rigging plan, these will be communicated to the lessee/user via the Manager Operations as soon as possible.

The lessee/user is required to correct the identified deficiencies and inform Frontline accordingly.

Frontline will approve or reject the rigging plan after review. If deemed necessary, Frontline may submit (parts of) the plan to a third-party expert for assessment.

Frontline reports its findings to the Manager Operations of AFAS Live.

Ground Support

Ground support structures must be provided with strength and stability calculations that account for all applied forces, such as: Operational loads like lighting, sound, set elements, climbing personnel or artists. As well as, external forces, such as: wind, tension, drafts, etc.

Calculations for ground support systems must comply with:

- Eurocode 0: Basis of structural design
- Eurocode 1: Actions on structures
- Eurocode 3: Steel structures
- Eurocode 9: Aluminium structures
- EN 15902-2: Truss and truss constructions

The following information must be provided:

- Number of towers
- Floor load per tower
- Position of the towers
- Construction height
- Scope of application
- Manufacturer

Calculations and/or data must be verified against the permissible values of AFAS Live and must be submitted in writing at least 14 days prior to the production period.

Execution of Work

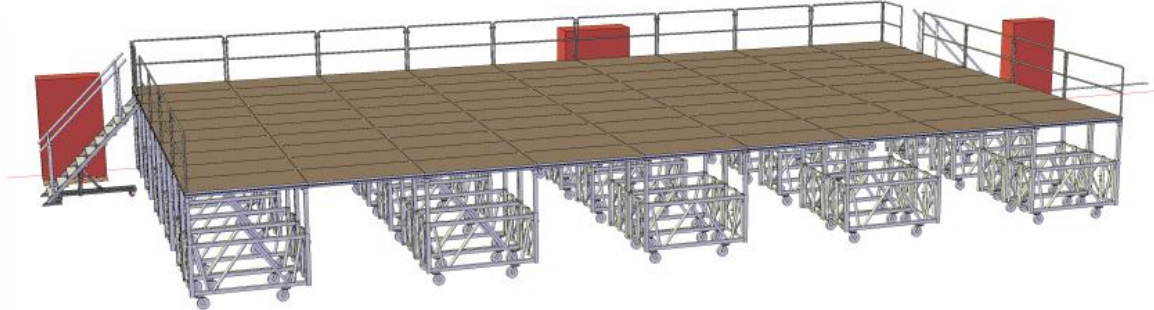
- At the start of the works, Frontline will inspect the lifting equipment brought in by the executing party. Frontline may reject the above-mentioned equipment, in which case it may not be used for the works. Frontline may also permit the use of the above-mentioned equipment, in which case it may be used for the works. Frontline will never formally approve such equipment: responsibility for the quality of the equipment and the manner in which it is used shall at all times remain with the lessee/user or the party providing the equipment.
- During the execution of the works, Frontline will monitor compliance with the statutory provisions as set out in this appendix.
- If Frontline identifies any shortcomings during the works, it may communicate these directly to the lessee/user. The lessee/user is obliged to remedy such shortcomings as soon as possible.
- Frontline is responsible for monitoring compliance with the lifting plan and the other provisions set out in this appendix and is therefore authorised to stop or suspend the works if it deems this necessary.

Technical and Legal Provisions

- All provisions set out in the Working Conditions Act and the regulations and decrees derived from it must be complied with.
- The lifting equipment used must be certified and must be used correctly.
- Personnel carrying out work at height, such as lighting technicians and similar crew members, must be equipped with the appropriate certified (personal) safety equipment and must use it correctly.
- Work at height must always be carried out in such a way that personnel are secured at all times using the available safety lines. Any temporary provisions must be submitted to Frontline for approval.
- The available safety lines are intended solely for personal fall protection and may not be used for any other purpose.
- To protect the roof structure, protective material such as jute and/or strips of carpet or similar material (so-called burlap) must be placed between the rigging equipment and the roof structure.

Appendix III: Standard Stage AFAS Live

(Not included in the rental)

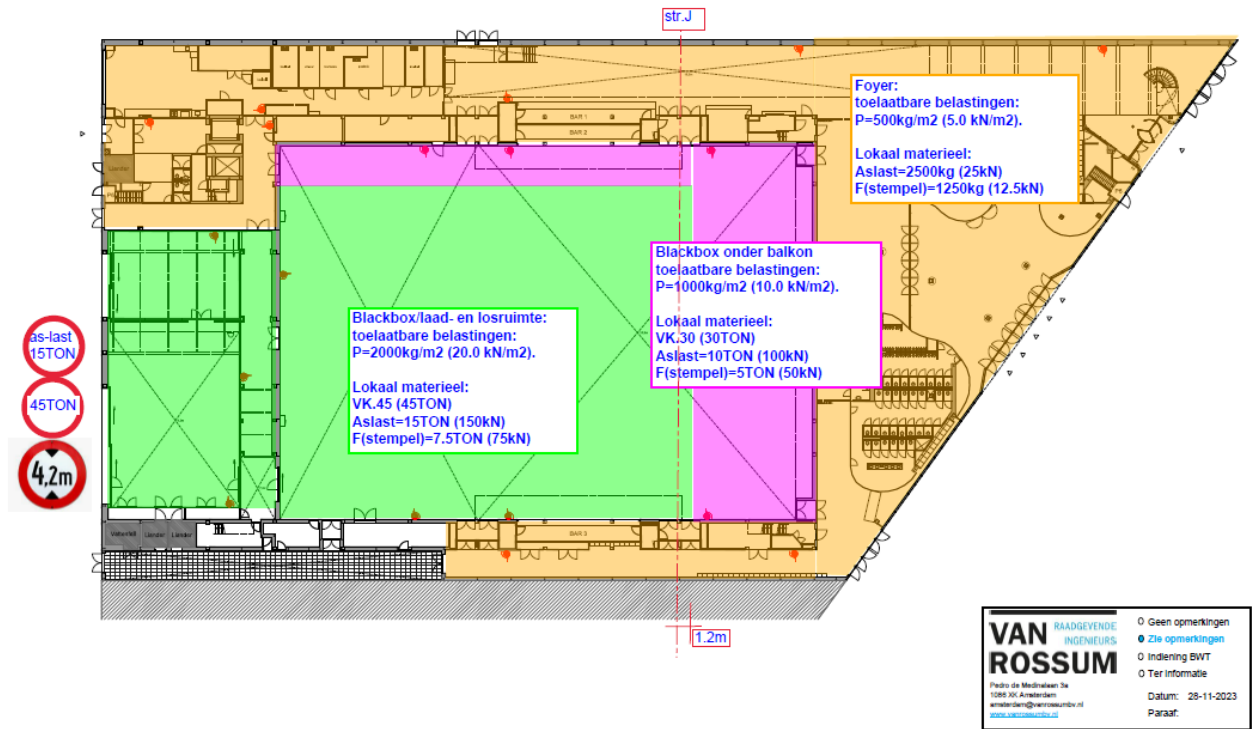


The stage consists of a modular Prolyte system on wheels that is adjustable in height. The most commonly used stage width is 18 m, which aligns with the side curtains of AFAS Live. The most commonly used stage depth is 10 or 12 m. In terms of height, standing concerts typically use a height of 180 cm, while seated shows usually use 140 cm.

Stageco Stage Material List

162 stage decks 2 x 1 m	142 main stage 14 spare decks 6 decks for balcony follow spots
2 stage decks 1 x 1 m	
Additional Accessibility Platform	13 decks of 2 x 1 m + ramp + railings
26 guardrails 2 m	23 straight 5 corners
8 guardrails 1 m	6 straight 2 corners
4 stair units	2 stairs to 1.40 m 2 stairs to 1.80 m 2 stairs to 2.00 m With 30 available steps, a maximum of 4 stair units can be built
Stage height	Minimum 130 cm to maximum 200 cm, adjustable in 10 cm increments
60 loose legs	Lengths: 20, 40, 60, 80 and 100 cm
Stage Skirting	1.58 m & 1.78 m

Appendix IV: Floor load capacity Black Box



Appendix V: Company rules AFAS Live

1. Applicability

- These company rules apply to everyone who is present in the AFAS Live;
- During events, the terms and conditions of the organizer may also apply.

2. Access

- Always follow the instructions of the AFAS Live staff;
- You may enter with a valid admission ticket or an accreditation approved by the AFAS Live. Accreditations are non-transferable and must be worn visibly;
- For independently visiting events (without supervision by an adult), the AFAS Live applies a minimum recommended age of 16 years. For night events, access for visitors under the age of 18 is not permitted;
- Upon entry, you may be subject to inspection by means of bag and belongings checks and superficial security pat-downs (inspection of clothing and shoes). Refusal of these checks means no access or removal from the AFAS Live;
- Anyone who leaves the AFAS Live during an event will in principle not be granted re-entry.

3. Prohibited Items and Goods

It is not permitted to bring the following items inside:

- Bags larger than A4-size and thicker than 10 cm;
- Objects and goods prohibited by law;
- Food and beverages;
- Drinking bottles, bidons, hard plastic and metal bottles;
- Dangerous objects such as weapons, knives, glass and cans;
- (Soft/hard) drugs and other mind-altering substances (including nitrous oxide cartridges), alcohol and nicotine pouches/snus;
- Toxic, flammable or explosive materials and fireworks;
- Skates, bicycles, scooters and skateboards;
- (Domestic) animals (bringing assistance dogs is discouraged);
- Professional photo, film and recording equipment (SLR cameras, cameras with detachable lenses, GoPros);
- Flags, flagpoles, banners, cardboard/paper signs with text larger than A4-size;
- Drones;
- Selfie sticks;
- Clothing with sharp or protruding elements (such as spikes);
- Non-foldable umbrellas;
- Laptops, e-readers and tablets;
- (Bicycle) batteries;
- (Sports) club-affiliated clothing or face-covering clothing;
- Chairs or stools;
- Perfume larger than 50 ml or deodorant spray cans;
- Other items that, in the opinion of the AFAS Live, may pose a danger to health, safety or public order.

4. Permitted Items and Goods

It is permitted to bring the following items inside, unless otherwise communicated by the AFAS Live or the organizer:

- Bags of a maximum A4 size and a maximum thickness of 10 cm or canvas bags with one compartment are permitted;
- Compact digital cameras with a fixed lens and phones with a camera;
- Small foldable umbrellas, but these must be stored in a locker;

- Medicines, provided a medicine passport or a current medication overview can be shown. The medical service may inspect medicines. Medication that needs to be refrigerated can be handed in to the medical service;
- Food and liquids due to allergy or illness are permitted with prior permission obtained via email (info@afaslive.nl);
- Jewelry, power banks, binoculars, small hand-held fans and breast pumps.

5. Conduct

- Remain in the area of the AFAS Live for which you have been granted permission;
- Ensure that you can identify yourself;
- Alcohol and smoking products may not be purchased or passed on to visitors under the age of 18. Ensure that you can show a (18+) wristband issued by the AFAS Live (if available) or your identification if the AFAS Live wishes to check your age;
- Possession, use or trafficking of drugs is prohibited;
- Access or presence in an intoxicated state is not permitted;
- Do not block pathways, emergency exits, staircases or fire-fighting equipment;
- Disruptive behavior, standing on chairs, climbing structures or the stage, stage diving, crowd surfing, throwing objects or liquids, or other behavior that causes or may cause damage is prohibited;
- Disturbance of order may lead to removal;
- Selling or distributing merchandise, food, drinks, leaflets, flyers and other advertising materials is not permitted;
- Dispose of waste in the designated bins;
- (Electronic) smoking is only permitted outside. Smoking is not allowed inside the AFAS Live;
- It is not permitted to make photo, video and/or audio recordings in the AFAS Live when a recording ban has been communicated by the organizer. Making recordings in backstage areas is not permitted without permission from the AFAS Live;
- Sexual harassment, aggression, violence, bullying and discrimination are not tolerated and may lead to removal and transfer to the police;
- Graffiti, open fire, and damaging or moving other people's property is prohibited.

6. Safety

- The sound level may be loud; wearing hearing protection is your own responsibility. The AFAS Live advises always using hearing protection. Hearing protection is available for purchase in the AFAS Live;
- Familiarize yourself with the emergency exits. Never use elevators during an emergency;
- If there is reason to do so, the AFAS Live may be evacuated;
- Visiting the AFAS Live is at your own risk. The AFAS Live is not responsible for damage as a result of a visit to the AFAS Live or cancellation of events.

7. Privacy

- The (camera) systems in the AFAS Live record images, sound and presence in the building 24 hours a day. In addition, there is cooperation between the AFAS Live and the municipality of Amsterdam, the police and other event venues in Arenapoort West, whereby (personal) data may be shared;
- The AFAS Live may make recordings of visitors to an event and use these during and after the event;
- Personal data, including camera footage, is processed in accordance with the AFAS Live's privacy policy.

8. Final Provisions

- If you do not comply with the house rules, the AFAS Live may refuse you access to or remove you from the AFAS Live. This may additionally result in a fine of €500 or compensation for damages, and a ban from entry. The AFAS Live may always refuse or remove you from the AFAS Live without stating reasons;
- If you are not admitted or are removed, you are not entitled to any compensation from the AFAS Live;
- In situations not covered by these house rules, the AFAS Live shall decide;
- The house rules may change; the most current version is always available on the AFAS Live's website.

Appendix VI: LED Screens and Narrowcasting

Front Façade Circular LED Screens

The screens are located on the front exterior façade. These three identical screens display content that is periodically interrupted by an advertising block.

Use of the façade LED screens is only possible as part of an additional marketing package (as included in the contract) and is subject to consultation with the Communications department.

Specifications

For producing video or images for the LED screens, the following design requirements apply:

- Format: 1920 x 1080 pixels
- Supported file types: MP4, JPEG
- Max. video length: 6, 12, or 30 seconds
- Max. 15,000 kbps
- Max. file size: 900 MB

The LED display measures a total of 3 x 12 meters, showing one video or image across three circular screens. Content is displayed without sound. The screens operate from 07:00 to 02:00 (a total of 19 hours per day).

Narrowcasting Screens

These are various designated screens in both portrait and landscape formats throughout the venue, including the entrance, foyer, and first floor (approximately 20 screens in total).

Use of narrowcasting depends on the selected marketing package and/or additional agreements as specified in the contract. By default, inclusion is limited to display on the event day itself (if applicable within the selected package).

It is possible to include one spot or image of up to 8 seconds in the programming, in consultation with the Communications department (communicatie@afaslive.nl). Content must be delivered no later than 2 working days prior to deployment.

Promotion of brands or events at locations other than AFAS Live is only permitted with prior consultation.

Specifications

Standard formats:

- 1920 x 1080 pixels (landscape)
- 1080 x 1920 pixels (portrait)
(Some screens in the venue are landscape format.)
- Supported file type: MP4
- Advertisement length: 8 seconds
- Max. file size: 900 MB
- Max. bitrate: 15,000 kbps
- Video is displayed without sound

→ In addition to the standard formats, there are also several screens with non-standard dimensions:

Triptych – landscape

Screens consisting of three connected portrait screens. Format:

- 3240 px x 1920 px (one visual across three screens)

Note: The screens are placed side by side in a continuous strip, with a 2 cm bezel between each screen. Avoid placing text across multiple screens.

Triptych – portrait

Screens consisting of three connected landscape screens. Format:

- 1920 px x 3240 px (one visual across three screens)

Note: The screens are stacked vertically in a continuous strip, with a 2 cm bezel between each screen. Avoid placing text across multiple screens.

Stretch Screens

Two stretch screens are located in the foyer. Format:

- 3840 px x 600 px

Appendix VII: Sustainability Statement

Sustainability Statement AFAS Live

AFAS Live is one of the largest music venues in the Netherlands and has been a frontrunner in sustainable event organization since 2001. Due to our extensive efforts, we received a Gold Green Key certification in 2010, which has been renewed annually ever since. In this sustainability statement, we explain our initiatives and provide all necessary information about the venue.

We continuously improve our operations and are always looking for short-term improvements. In addition, we have defined long-term goals, which were presented during the Eurosonic showcase in January 2023. In short, we aim to become a fully circular and carbon-neutral organization by 2030. This is an ambitious goal, but we believe it is the only way to remain a future-proof venue.

Our sustainability policy and strategy are based on five pillars: Energy, Water, Materials & Waste, Food & Beverage, and Mobility. Below is an overview of our initiatives within these pillars.

ENERGY

- Our building is completely gas-free and powered by 100% European wind and solar energy with Guarantees of Origin.
- The building is heated via district heating. We are currently transitioning our cooling system, which will operate on district cooling from 2027 onwards.
- Our Foyer is heated using so-called Big Ass Fans. Warm air rises, and ceiling fans help push the heated air downward, making it easier to heat the 14-meter-high space while reducing energy consumption.
- All front-of-house and backstage lighting is LED.
- We use motion sensors to reduce electricity usage.
- We are exploring the installation of solar panels on our roof.

WATER

- All urinals in front-of-house areas are waterless, saving significant amounts of water.
- All tap water is high-quality drinking water. This means that guests, artists, and crew have free access to drinking water throughout the building at all times. We currently sell bottled water at the bar but aim to switch to a lower-plastic alternative in the future.
- We encourage local crew members to bring reusable water bottles and use tap water backstage.

MATERIALS & WASTE

- Our cups are made from rPET plastic, which we collect after use and recycle (see Food & Beverage).
- We do not use plastic straws; paper straws are available at our cocktail bar.
- We separate waste both front-of-house and backstage, including glass, paper, rPET, PD (plastic packaging), organic waste, coffee grounds, deposit materials, wood, textiles, electronics, and bulky waste.
- Our contracted cleaning company uses environmentally friendly cleaning products.
- All toilet paper and paper towels are environmentally friendly and carry both the Nordic Swan label and the European Ecolabel.
- Our restrooms are equipped with Dyson Airblade hand dryers, reducing paper use.

FOOD & BEVERAGE

- As mentioned above, beverages are served in rPET cups. We have implemented a return system, making it easier to collect and recycle all rPET plastic used in the building. The cups are transported to a recycling facility, where they are cleaned, processed into pellets, and turned into new food-grade material. A video of this process is available. Our current average recycling rate is 81%.
- We have a small food kiosk in the foyer where vegan and vegetarian options are always available. Our crew catering is currently 60% vegetarian and approximately 30% vegan. We aim to further increase plant-based options in the future.
- We aim to reduce food items with a high environmental impact in our restaurant and food court and replace them with lower-impact, primarily plant-based alternatives.

MOBILITY

- Vehicles parked inside the building are not permitted to run their engines unnecessarily. This is actively communicated to all parties present during events.
- We collaborate with Ziggo Dome, Johan Cruijff ArenA, the municipality, and various regional and national transport companies. In weekly meetings, we discuss upcoming events and coordinate to avoid traffic congestion and unnecessary truck movements.
- Team members primarily commute by public transport or bicycle.
- Currently, approximately 50% of our visitors travel by public transport. We aim to increase this percentage and encourage guests to travel to the venue in a more sustainable way.

Appendix VIII: Catering Rider

This document outlines, per catering area, the specifications of the available equipment and materials. It also includes the guidelines on how the catering areas used must be cleaned and handed over after completion of the work.

If, upon arrival, you find anything in the space that does not match the agreed condition, please report this before starting work to the Manager Operations of AFAS Live via +31 20 4097 955 / internal number 955.

Cooking on gas and the use of open flames are prohibited at AFAS Live.

1. Ground Floor Kitchen

(For layout, see end of appendix)

Deep fryer

Capacity: 14 liters. The fryer is double unit; the right fryer is for caterer use, the left is used by AFAS Live.

Cooking unit (2 burners)

Power per plate: 2.6 kW. Each plate has 6 adjustable settings.

Pass-through dishwasher with infeed and outfeed tables

Capacity: 65 racks per hour / 1,200 plates per hour

Sink unit with mixer tap

Table dimensions: 190 x 80 x 90 cm (w x d x h)

Sink dimensions: 50 x 50 x 30 cm

Cold storage (lockable)

Dimensions: 180 x 200 x 270 cm

Door dimensions: 100 x 200 cm

Equipped with high-temperature alarm.

Worktables (mobile)

Quantity: 3

Dimensions: 290 x 100 x 92 cm

Equipped with heavy-duty wheels with base plates; each wheel supports up to 250 kg. Two out of six wheels are braked.

Extraction hood with baffle filters

The cooktop and fryer are fixed under the hood. There is 5.30 m of free space available for placing additional equipment underneath.

Power supply

See wiring diagram at the end of this appendix.

Water

3x supply and drainage connections.

Oven

The oven present in the ground floor kitchen is not owned by AFAS Live.

2. Kitchen 1st Floor – Local Crew Catering

(For layout, see end of appendix)

Refrigerator

Stainless steel, 400 liters, lockable, mobile

Freezer

Stainless steel, 400 liters, lockable, mobile

Sinks

Integrated into worktop, double unit with swivel mixer tap

Dimensions: 40 x 40 x 25 cm

Griddle

Dimensions: 40 x 61 cm

With integrated grease tray

Continuously adjustable up to 300°C

Extraction hood with baffle filters

The griddle is integrated into the worktop under the hood

Total hood width: 120 cm

Syrup bar

Use subject to approval by AFAS Live. Provides filtered, chilled, and sparkling water combined with syrup flavors to create soft drinks. Flavors may vary.

Coffee machine

Use subject to approval by AFAS Live. Prepares a wide range of coffee and specialty drinks.

Power supply

See wiring diagram in appendix.

3. Kitchen 2nd Floor – Artist Catering

(For layout, see end of appendix)

Refrigerator

Stainless steel, 400 liters, lockable, mobile

Freezer

Stainless steel, 400 liters, lockable, mobile

Sinks

Double unit with swivel mixer tap and rinse spray

Dimensions: 50 x 50 x 30 cm

Extraction system

6 extraction grilles integrated into the ceiling

Syrup bar

Use subject to approval by AFAS Live (same system as 1st floor).

Coffee machine

Use subject to approval by AFAS Live.

Power supply

See wiring diagram at the end of the appendix.

Separate preparation kitchen (adjacent to main catering area)

- Extraction hood with baffle filters
- 3.00 m free space for equipment placement
- 16 A power connection and water supply/drain available (e.g. for oven)

Sinks

Integrated into worktop, double unit with swivel mixer tap

Dimensions: 40 x 40 x 25 cm

4. Dressing Rooms (2nd Floor)

Refrigerator

All 8 dressing rooms are equipped with a refrigerator (non-mobile).

5. Cleaning and Handover of Catering Areas

Before departure, a joint inspection must be conducted with the Manager Operations of AFAS Live to check the following items. Failure to do so, or incorrect handover, may result in cleaning charges. It is not permitted to leave materials behind for later collection.

Floors

Must be left swept clean.

Furniture

Return to original position; wipe tables clean; place chairs on tables.

(Mobile) worktables and sinks

Clean thoroughly with water; return mobile tables to original position.

Dishwasher

Drain using the “empty” function; clean filter; return racks to holders.

Infeed/outfeed tables

Clean with water.

Cold storage

Must be empty and swept clean.

Deep fryer

Remove all oil/fat. Dispose in designated fat waste container (available via Manager Operations or runners).
Clean fryer and housing.

Griddle

Clean with water and remove all food residues. Clean grease tray.

Cooktop

Clean thoroughly and remove all food residues.

Refrigerators and freezers

Must be empty; clean inside and outside.

Water and coffee machines

Drip trays must be emptied and cleaned.

Waste bins

Dispose of waste bags in AFAS Live waste containers (ground floor). For non-backstage catering, the caterer is responsible for waste disposal.

Dressing rooms

Must be cleared of all food and beverages after the event. No items may be left behind. All plates, glasses, cutlery, decorations, etc. must be removed. Items left behind will not be stored.

Refrigerators must be cleaned inside and outside.

Appendix IX: Special Effects Rider

SFX Rider AFAS Live

Introduction

This document outlines the various rules, timings, requirements and regulations for the use of Special Effects (SFX) at **AFAS Live**. For certain types of SFX, permits or approvals are required, and depending on the type of SFX, approval timelines may differ. Where applicable, this is specified per SFX type.

Due to incidents in the past, inspections and enforcement have intensified. Therefore, we comply strictly with Dutch laws, regulations and covenants. Compliance is mandatory.

In addition to SFX, this document also includes regulations for the use of drones/flying objects and cable cams.

For questions or clarifications, the Artist must contact the **Promoter or AFAS Live**.

When personal data is needed for approval, the processing of this data takes place in accordance with the following privacy statement: <https://www.afaslive.nl/en/privacy-policy>

This document covers:

- Production Risk Assessment (PRA)
- Smoke machines & hazers
- Open fire/flames during the performance
- (External) Fire Marshal
- Pyro
- CO2
- Propane
- Confetti
- Fake/imitation firearms or other weapons
- Lasers
- Drones or other flying objects
- Cable cams
- Venue specs AFAS Live

Production Risk Assessment (PRA)

For all Special Effects (SFX) used at our shows, a Production Risk Assessment (PRA) must be provided at least two (2) weeks in advance, including at least:

- The user's safety plan tailored to the event, including:
 - o an overview of the safety measures taken
 - o the risks per individual component
 - o how likely they are to arise
 - o the actions to be taken in case of incidents
- Drawings showing where the SFX are placed, including safety distances
- Certificates of the operators
- Insurance documents
- Product sheets and descriptions

Smoke Machines & Hazers

- The use of smoke machines and/or hazers is permitted without a permit.
- Be aware that smoke detectors may need to be switched off and Fire Marshals may be required on site.
- Contact the Promoter's production manager before using smoke machines and/or hazers.

Open Fire/Flames During the Performance

- Applications for approval for the use of open fire during the performance must be submitted at least fourteen (14) weeks before the show date. If not, approval may not be given in time. Specifications of open fire goods and equipment, a stage plot and a set list must be enclosed.
- Open fire/flames are only allowed when approved by AFAS Live, the Promoter and the Fire Marshal.
- Regulations for the use of open fire/flames may be venue-specific. Contact the Promoter for details.
- No open fire/flames may be used above the audience.
- If the Artist wishes to use open fire/flames, the Artist shall provide the Promoter with:
 - o a copy of the Artist's certificate of public and employers' liability insurance
 - o a certificate of products liability insurance in an amount of indemnity of not less than five million US dollars (US \$5 million) at least one (1) month prior to the show date, along with all relevant statutory paperwork
 - o all requested documentation to ensure all open fire/flames meet all local standards, local authority requirements and specific AFAS Live requirements by the date notified to the Artist by the Promoter
- The same requirements apply to any contractor or subcontractor used by the Artist. Each party must provide the Promoter with a copy of their insurance documentation and other relevant documentation.
- The following information must be provided for approval:
 - o drawing of the layout plan showing flames, theatrical scenery, audience, storage bottles and hose routes
 - o description of the materials used (gas cylinders, aerosols, hoses, valves, manuals, inspections, etc.), including distances from the audience and theatrical scenery. The safety distance must be specified in the product manual and risk assessment of the effect
 - o flame height and flame duration
 - o user's certificate of professional competence

(External) Fire Marshal

- Productions that use SFX involving open flames require the Artist to hire an external Fire Marshal. The Fire Marshal must have no affiliation with the party executing the open flames.
- The Promoter must inform AFAS Live which Fire Marshal has been hired.
- Prior to the event, the Promoter must supply the Fire Marshal with all relevant production information related to the use of open flames, including AFAS Live in CC, such as:
 - o contact details of the executing party
 - o description of the installation to be used
 - o layout plan indicating the position of the flames and combustible materials (gas, aerosol, fluid)
 - o safety plan including safety distances
 - o cue list
- The external Fire Marshal must be present at least one hour before the show starts to receive instructions from the SFX party, such as the layout plan, cue list and safety plan.
- The external Fire Marshal must report by phone to the on-duty venue operations manager upon arrival.
- The external Fire Marshal must have a direct line with the control center, for example by radio.
- The external Fire Marshal must remain present until at least 30 minutes after the last cue, unless combustible materials are still present at that time.
- The external Fire Marshal must bring at least two of their own hand-held fire extinguishers.
- The external Fire Marshal must be positioned near the area where open flames are executed and where combustible materials are stored for the entire duration of the assignment. They may not roam around the building.
- Prior to departure, the external Fire Marshal must call the on-duty venue operations manager to report on the assignment and confirm departure.

Pyro

- Applications for pyro licenses must be submitted at least fourteen (14) weeks before the show day. If not, approval may not be given in time. Specifications of pyro goods and equipment, stage plot and set list must be enclosed.
- Only Promoter-accredited Dutch pyro technicians are permitted.
- The pyrotechnic company must apply for a permit for the use of fireworks itself. The venue/Promoter must receive a copy of this permit by e-mail.
- No pyrotechnics may be brought into AFAS Live or used without the express written permission of the Promoter.
- If approved, all on-site arrangements for pyrotechnics must be agreed with the Promoter and, if appropriate, the fire officer and the medical officer.
- The Artist shall adhere to all documentation and operating procedures.
- The Artist shall provide the Promoter with all requested information as agreed with or instructed by the Promoter's production manager. Even if approved, the use of pyrotechnics remains subject to the ongoing approval of the Promoter, who may stop the use of pyrotechnics at any time before or during the performance.
- No pyro may be used above the audience.
- If the Artist wishes to use pyrotechnics, the Artist shall provide the Promoter with:
 - o a copy of the Artist's certificate of public and employers' liability insurance
 - o a certificate of products liability insurance in an amount of indemnity of not less than five million US dollars (US \$5 million) at least one (1) month prior to the show date, along with all relevant statutory paperwork
 - o all requested documentation to ensure all pyrotechnics meet all local standards, local authority requirements and specific AFAS Live requirements by the date notified to the Artist by the Promoter
- The same requirements apply to any contractor or subcontractor used by the Artist.
- Storage of pyro material inside AFAS Live is restricted to a day stock. A designated pyro room, under the supervision of a local Dutch pyro technician/license holder, must be used. Additional material must be stored in a special bunker container outside the venue at the Artist's expense.
- Transportation of pyro materials is only allowed when the Human Environment and Transport Inspectorate (Inspectie Leefomgeving en Transport) has authorized the classification code of the pyro. Importing, exporting and making pyro available in the Netherlands must always be reported to this authority.

CO2

The following applies where CO2 cylinders are used for CO2 effects:

- Cylinders must always be delivered in a cylinder cage or crate.
- Cylinders must never be left outside a cage or crate in any area.
- When in use, cylinders must be secured by means of a cage/crate or by strapping them to a fixed object. Cylinders must never be left unattended.
- Delivery and collection of CO2 must always take place on the day of the event.
- Cylinders are not allowed to remain inside AFAS Live overnight.
- Used and unused cylinders must be stored outside the venue or in a pre-defined area inside the venue.
- Storage of cylinders must comply with PGS-15 legislation.

Propane

The use of propane for flame effects is only permitted in compliance with the following:

General

The use of propane is only permitted after prior written approval by **AFAS Live**. A method statement and risk assessment must be submitted in advance, including technical specifications of the equipment, type and quantity of gas, and operational procedures.

Propane Cylinders

Propane cylinders are preferred over screw-on canisters from a safety perspective. Only propane cylinders with a maximum content of 6 kg (13.2 lbs) are permitted inside AFAS Live.

Cylinders must:

- be legally approved and in good condition
- be fitted with approved pressure regulators and hoses suitable for propane
- have hoses clearly within inspection date and free from damage
- be equipped with shut-off valves at the cylinder and, where applicable, at the appliance
- remain upright at all times and be positioned securely to prevent tipping
- be closed when not in active use, including during build-up, rehearsals and immediately after the show

In case of malfunction or incident, cylinders must be immediately shut off and, if required, safely disconnected and removed from the venue according to venue procedures.

Screw-on Propane Canisters

The use of screw-on propane canisters is discouraged due to increased risks related to leakage, overheating and limited shut-off options. If canisters are used, this must be explicitly approved in advance by **AFAS Live**.

Where approved, the following applies:

- Canisters must be in good condition and compatible with the flame unit.
- Sealing rings and connection points must be undamaged and properly fitted; defective seals are not permitted.
- Canisters may only be installed as late as reasonably possible before the show and must be removed immediately after use.
- When attaching or detaching canisters, gas release must be minimized and preferably carried out outside the venue.
- Canisters may not remain installed in flame units overnight.

Storage of Propane

- Spare and used propane cylinders and canisters must be stored in accordance with PGS 15 regulations and in consultation with AFAS Live.
- Storage inside the venue is only permitted in a pre-approved designated area.
- Empty cylinders and canisters must be fully depressurized and must not be capable of leaking residual gas.
- Where possible, storage outside the venue is preferred.

Confetti

- If confetti is used during an event, the Artist will be charged extra cleaning fees.
- Due to sustainability goals, only paper confetti is permitted. Other confetti materials such as metallic, plastic or snow confetti are prohibited.
- The Artist must check with the supplier/user whether the confetti to be used meets these conditions. If the confetti sheds color onto floors or other venue property, the lessee will be charged the full repair costs.
- A safety distance towards the audience must be maintained.

Fake/Imitation Firearms or Other Weapons

- In the Netherlands, imitation firearms for show purposes may only be hired from certified rental companies. If the Artist intends to use imitation firearms or weapons in the show, they must contact the Promoter as soon as possible, but no later than six (6) weeks before the show, so that the Promoter can arrange this.

- Possession of firearms and other weapons, as well as fake/imitation firearms, is a felony in the Netherlands. This also applies to importing such items.
- Notification of the required firearms and/or ammunition must include:
 - o photos of the firearms and/or ammunition to be used during the show
 - o details of the firearms and/or ammunition to be used, such as kind of weapon, manufacturer, model/type and caliber
- If imitation firearms or weapons are used without the Promoter's prior knowledge or permission, the Promoter shall impose a minimum penalty of EUR 10,000 on the Artist, and the Artist shall further be liable for all damages and costs incurred by the Promoter. Local Authorities may also seize/confiscate the firearms and other weapons and report the Artist.

Lasers

- The Promoter must be notified as soon as possible, but at least six (6) weeks before the show date, if laser systems are to be used. The laser systems and show must comply with the Promoter's laser policy as stated in this document.
- No lasers of any kind may be brought into AFAS Live or used without the express written permission of the Promoter. If approved, all on-site arrangements for lasers must be agreed with the Promoter and, if appropriate, the fire officer and medical officer. The Artist shall adhere to all documentation and operating procedures. Even if approved, use of lasers shall remain subject to the ongoing approval of the Promoter, who may stop the use of lasers at any time before or during the performance.
- If the Artist intends to use lasers, the Artist shall provide the Promoter with:
 - o a copy of the Artist's certificate of public and employers' liability insurance
 - o a certificate of products liability insurance in an amount of indemnity of not less than five million US dollars (US \$5 million) at least one (1) month prior to the show date, along with all relevant statutory paperwork
 - o all requested documentation to ensure all lasers meet all local standards, local authority requirements and specific AFAS Live requirements by the date notified by the Promoter
- The same requirements apply to any contractor or subcontractor used by the Artist.

Laser systems and their usage must comply with the following IEC standards and technical report:

- IEC 60825: Safety of laser products
 - o Part 1: Equipment classification and requirements
 - o Part 3: Guidance for laser displays and shows
 - o Part 14: A user's guide

In addition, the following policies apply:

- Employee exposure to laser light must comply with the exposure limits defined in the Artificial Optical Radiation Directive (Directive 2006/25/EC).
- All personnel at the event must be informed by signage about the presence of lasers and related safety precautions.
- At least one Laser Safety Officer (LSO) must be constantly present on site. The Promoter must be informed who from the touring company will act as LSO at least six (6) weeks before the show date.
- A risk assessment for the use of lasers at the specific event must be sent to the Promoter at least six (6) weeks before the show date.
- The Promoter must be informed if the laser radiation could cause an unintentional fire hazard, and appropriate measures must be taken.
- The minimum distance between the laser output window and the audience must be at least 4 meters.
- A minimum separation of 3 meters in height above the audience and 2.5 meters laterally should be maintained between laser beams exceeding the audience maximum permissible exposure (MPE) and any surface on which audience members may reasonably be expected to stand.
- Lasers should never be aimed at TV or CCTV cameras. Safety zones must be defined in the presence of an Artist production representative, venue representative and the Promoter's production manager, and must be programmed into the equipment before the lasers may be turned on. When defining these zones, the possible presence of a balcony at the venue and reflective objects such as mirror balls must also be taken into account.

- A demonstration must always be carried out in sufficient time before doors open, preferably early in the afternoon, in the presence of an Artist production representative, the LSO, a venue representative and the Promoter's production manager or delegate. During this demonstration, the safety zones will be finalized.
- Laser systems, operator consoles and other control equipment must not be accessible to unauthorized persons and must be locked by the operator.
- Lasers must be operated by certified, trained staff responsible for closely monitoring the laser show, the equipment and the beam at all times.
- The operator must shut down the equipment immediately if there is any doubt regarding public safety, including but not limited to equipment malfunction, uncertainty about operating conditions, unrest among the public or evacuation of the venue.
- Audience scanning is only allowed if all of the following conditions are met:
 - o the maximum laser projector output does not exceed the level required to obtain the intended effects and does not exceed the audience MPE
 - o pulsed lasers may not be used for audience scanning; only continuous wave lasers are allowed
 - o a single beam may never be aimed at the audience; only diverged beams are permitted for audience scanning
 - o lasers must not be aimed at TV or CCTV cameras or other non-audience safety zones
- Outdoor laser use requires a permit. The Human Environment and Transport Inspectorate (Inspectie Leefomgeving en Transport) assesses whether a laser show may take place and under what conditions, based on the location, type of lasers and other event parameters. The municipality issues the permit.

Notwithstanding the above, the Artist shall at all times remain liable for all damages and costs incurred by the Promoter in relation to issues, accidents, injuries, or fines arising from the use of lasers during the production.

Drones or Other Flying Objects

- The use of drones or other flying objects in venues is not permitted unless expressly approved in writing by the Venue.
- In exceptional cases, permission may only be granted by the Venue, in consultation and agreement with all relevant parties. If approved, the executing party must comply with all local legislation and must hold the necessary permits and sufficient insurance.
- All requests must be submitted at least fourteen (14) days prior to the event date, unless the Venue confirms otherwise in writing
- The executing party shall provide the Venue with a copy of their insurance documentation and other relevant documentation.
- Even if approved, the use of drones or other flying objects shall always remain subject to the Promoter's ongoing approval, who may stop such use at any time before or during execution.
- Live Nation SEMEA024 – Exception Approval Process must be completed by the venue in cooperation with the Promoter.
- Live Nation SEMEA003 – Unmanned Aircraft Systems must be completed by the drone operator, including:
 - o Drone Pilot License
 - o Flight plan
 - o Risk Assessment and drone specifications
 - o Insurance (10 million USD + Special Endorsement 001 – additional insureds "VENUE NAME or PROMOTER / Live Nation")
- All information must be sent to Live Nation, and approval is only granted after written confirmation by the Global Security Department of Live Nation.
- The applicant must always keep a copy of the approval on file.

Cable Cams

The use of cable cams is allowed, provided the following requirements are met:

- If the Artist intends to use a cable cam, the Artist must provide the Promoter with the following documents at least fourteen (14) days before the show:

- plan of action including drawings and calculations
- installation certification of the cable cam system
- cable and suspension system including locking
- product sheets and descriptions
- risk assessment
- insurance of not less than five million US dollars (US \$5 million) per year and two and a half million US dollars (US \$2.5 million) per incident
- overview of deployment of the cable cam at previous events
- It is not permitted for crew to perform maintenance, such as battery changes or other system changes, over crowds from the catwalk or other areas above the audience.
- It is not permitted for cables to run over pyro or open fire.
- AFAS Live will confirm in writing whether operating the cable cam is approved cam based on the submitted documents.
- This approval process will be carried out in cooperation with the venue's structural/engineering party and any other relevant venue parties. Consultancy costs may be charged to the Artist. Contact the Promoter for details.
- The executing party shall always be liable for any incidents caused by its operation.

Venue Specs

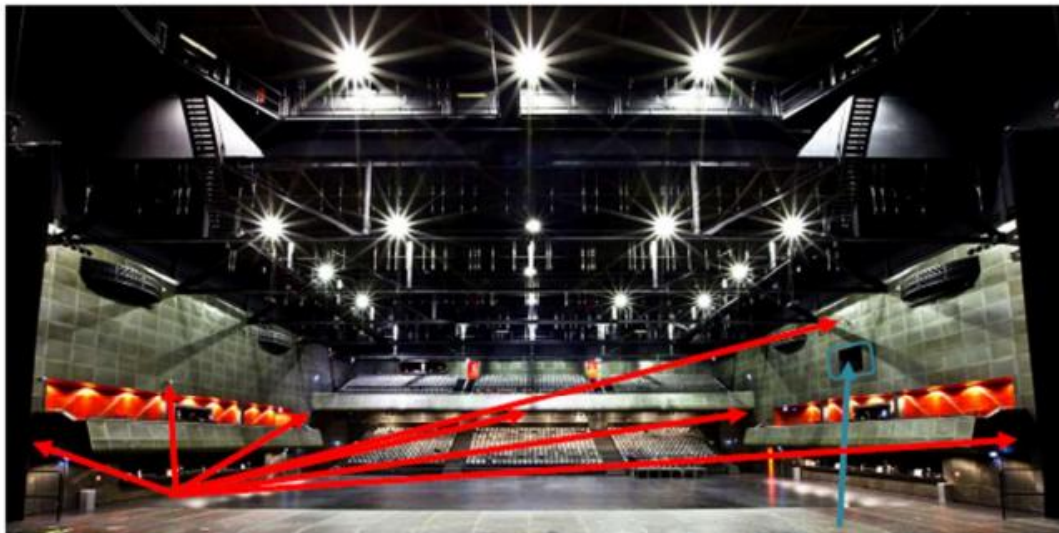
<https://www.afaslive.nl/en/about-afas-live/map-rider>

Final Note

For SFX not specifically mentioned in this document, please contact AFAS Live to discuss what is or is not possible.

Please note that the Artist and its production shall be liable for all fines and damages resulting from any violation of these regulations. Furthermore, the Promoter/AFAS Live reserves the right to stop a show if these regulations are violated, without accepting any liability in this respect.

Laser Safety Zones



CCTV-Cameras

Security Command Center

